



Implementing Disaster Management Information Systems

12th November 2010

Michael Howden

michael@sahanafoundation.org



***What are the Challenges
in Implementing
Disaster Management
Information Systems?***



Challenges

- Uncertain and changing conditions.
- Communication / Culture Gap:
 - NPOs/Government \leftrightarrow IT Providers
- Limited time and resources
- Technology is Easy
 - Getting people to use it is hard!

Strategies



Think about:

- Value
- People
- Locations
- Activities
- Inputs
- Outputs
- **Existing Systems and Processes**

Get people to think back to the morning – perhaps think of their work, and design a Information System

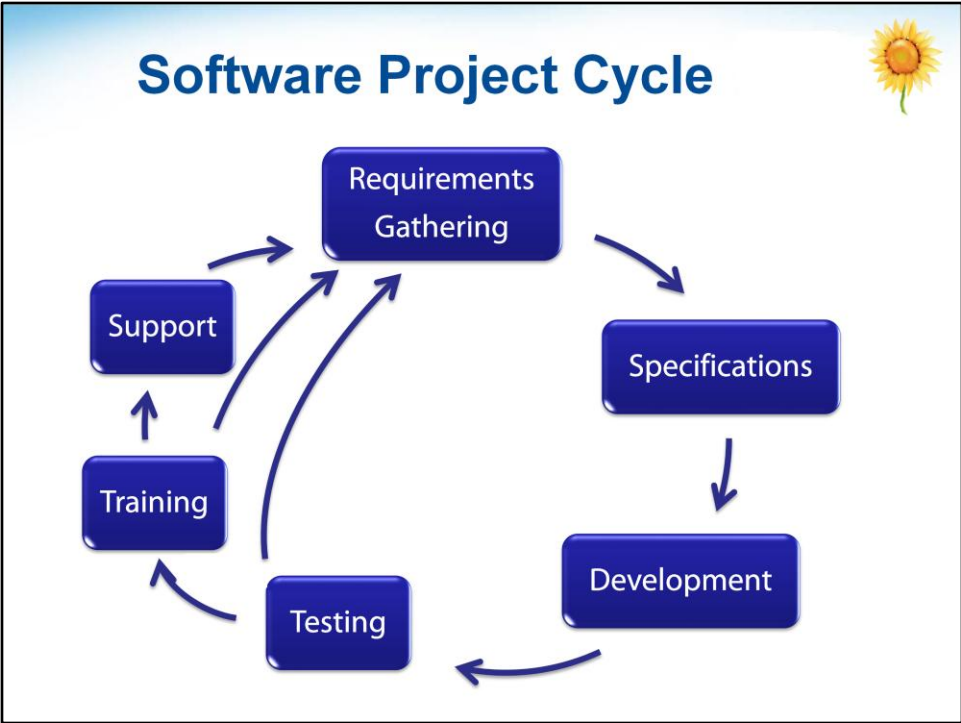
Getting People Onboard



- Have a Project **Champion**
- Engage people across the spectrum
- Get commitment
- Respect different priorities
- Consider:
 - How will the system change how people work?
 - How will the system create value for them?



Additional Material...



Think about Participatory Programming



Requirement Gathering

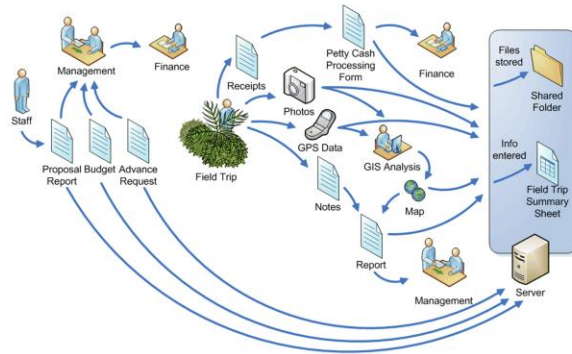
- From whom?
 - Talk to the end users
- Listen
- Be curious!
- ‘Real needs’ vs. ‘perceived needs’
- What are the problems?
 - Then look for the solutions

SKIP



Specifications

- Translates the **Disaster Manager's** requirements to **Systems Developer's** design.
- Who are the users?
- User Stories
- Flow Charts



User Testing



- Test Early, Test Often
 - 3-4 Users
- Test with Anyone
- Don't be defensive!
- Testing Triage
 - Long Hanging Fruit
- Testing = Participation
 - But also has a cost

www.sensible.com/secondedition



Training

- Software or Processes?
- Ceremonial
- Interactive
 - Simulations
 - Participation
- Collect feedback on software





Support

- Needs to be ongoing
- Approachable for Users
- Responsive
- Clear
- Objective

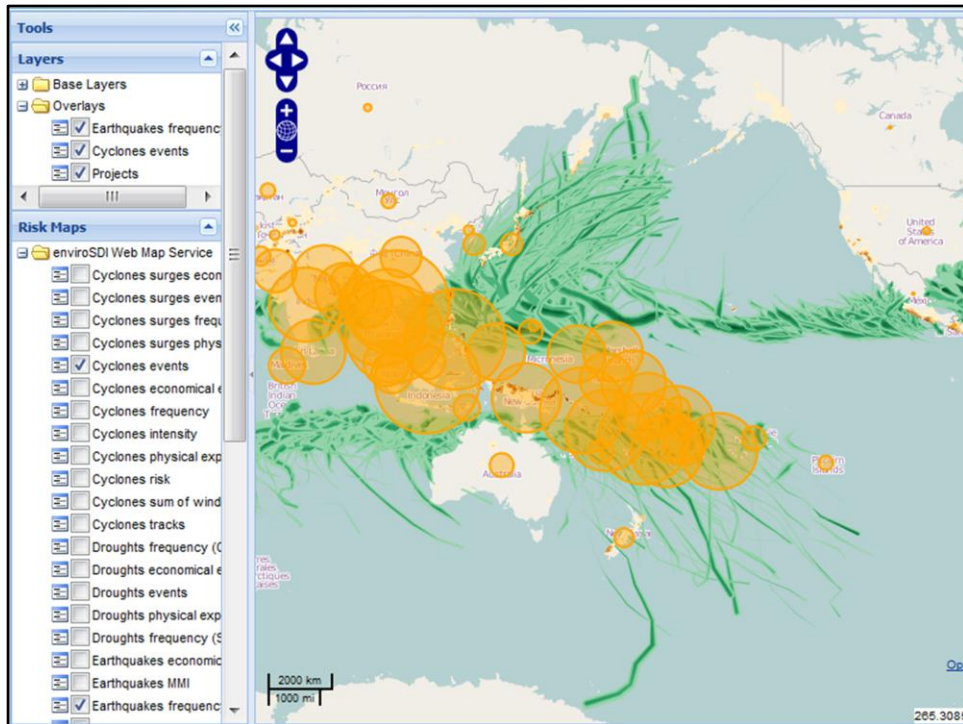




Location! Location! Location!

- Geographical Data
 - Location Hierarchies
 - Administrative Boundaries
- Source
 - Government?
 - Commercial?
 - Crowd?
- Share
 - Provide Web Map Services

Discuss the challenges of getting geographical data to support DMIS, where you might be able to get that from and what you can do with that.



Here Web Map Services being used to share information

However, because we didn't have data on administrative boundaries within countries, all of the project data is only by country