



OpenStreetMap: Technical

4 November 2010, Sahana Camp

Fran Boon

fran@sahanafoundation.org



Agenda

- Copyright
- Features
- Tools
- Practical
- Vietnam

NB Although this session says 'Technical', OpenStreetMap is designed to be edited by amateurs rather than GIS professionals.



Copyright

- Do not copy copyright material
- Easter Eggs
- Yahoo Satellite Imagery is an exception

<http://wiki.openstreetmap.org/wiki/Copyright>

If copyright material is copied then this pollutes the database & the offending data needs to be removed.

Commercial map providers often place 'Easter Eggs' into their maps of places which don't really exist – if these are found in other maps then it is obvious that they have been copied!

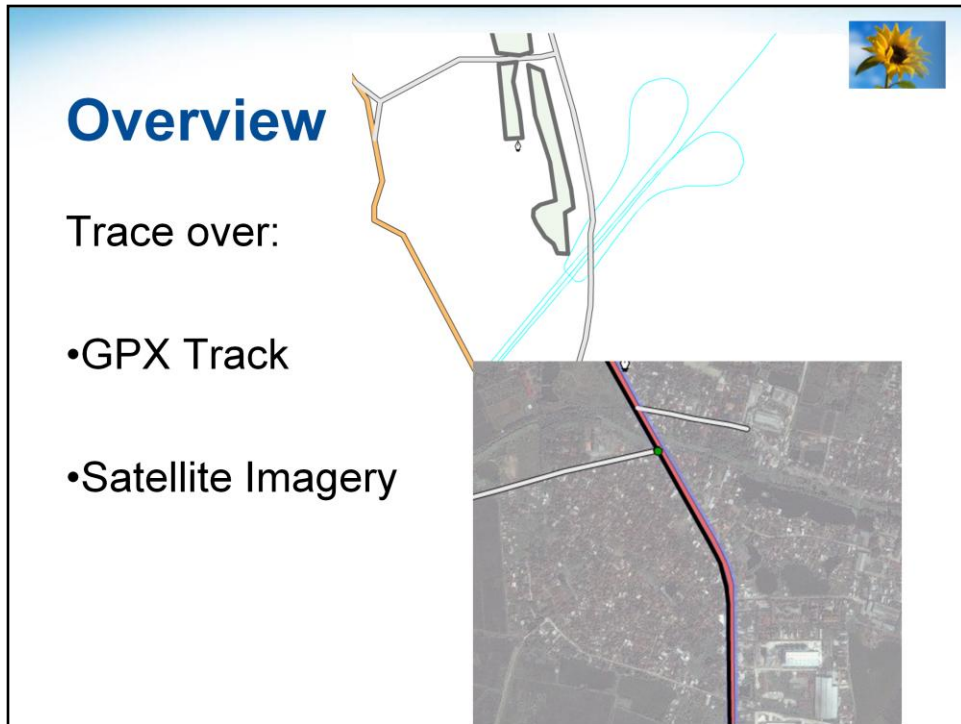
http://wiki.openstreetmap.org/wiki/Copyright_Easter_Eggs

Yahoo have given a specific permission to OpenStreetMap to use their Satellite Imagery for tracing.

Overview

Trace over:





- GPX Track
- Satellite Imagery



Tracing over Satellite imagery is sometimes called Digitisation



Elements

- Node 
 - Bank, Restaurant, Shop
- Way 
 - Street, Railway, River
- Area 
 - Park, Lake
- Relation 
 - Bus Route

<http://wiki.openstreetmap.org/wiki/Elements>

A *node* is the basic element of the OSM scheme. Nodes consist of latitude and longitude (a single geospatial point).

When used on a GPS, they are often called POIs (Points of Interest)

A Way is a series of connected Nodes.

They are used to represent linear features such as streets, footpaths, railways, and administrative boundaries are referred to as ways.

An Area is a Closed Way which is tagged to indicate that it is an area, e.g. `landuse=industrial`

A Relation is a collection of related Elements.



Features (Tags)

name = Hà Nội

name:en = Hanoi

highway = primary

highway = residential

highway = track (unpaved)

highway = footway

waterway = river

amenity = fuel

amenity = parking

amenity = restaurant

amenity = school

shop = supermarket

office = ngo

place = village

Tags are key=value pairs.

Each Element can have multiple Tags associated with it.

Whilst any can be used, it is useful to use the ones which other people are using:

Full list of agreed Features:

http://wiki.openstreetmap.org/wiki/Map_Features

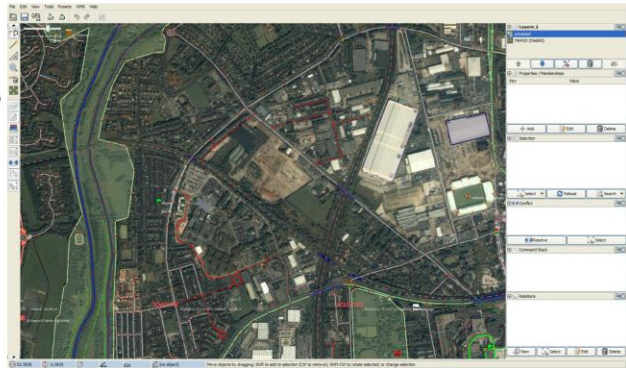
New Features still being discussed:

http://wiki.openstreetmap.org/wiki/Proposed_features



JOSM

- Powerful offline editor
- Java, cross-platform
- Download chunks of data locally
- Edit
- Upload edits



<http://wiki.openstreetmap.org/wiki/JOSM>



OSMAnd

Android:

- Offline Map Viewer
- Editor
 - Add Poi
 - Add OSM Bug
 - Record GPX Track



Potlatch

- Web Editor
- On the main OpenStreetMap site
- Integrated into Sahana
- Can see uploaded GPX Tracks
- Can see Yahoo Imagery (& others)

View Edit

Potlatch 1.4 Drag and drop points of interest

Airport	Bus stop	Ferry	Parking	Rail station	Taxi rank	Bar
Cafe	Cinema	Fast food	Pub	Restaurant	Theatre	Convenience s
Hotel	Pharmacy	Postbox	Recycling	Supermarket	Telephone	Fire station
Hospital	Police station	Place of worsh	Museum	School		

Help Find tag Advanced Editing offline Save

If you hit the 'Edit' tab on the main www.openstreetmap.org site then this brings up the Potlatch online editor (written in Flash).

We are embedding & integrating the new version (Potlatch2) into Sahana, but the editor isn't quite ready & the integration is currently basic.

http://wiki.openstreetmap.org/wiki/Potlatch_2

The name potlatch means a 'giving away ceremony':

<http://en.wikipedia.org/wiki/Potlatch>



Practical

- Sign-up for an OpenStreetMap account
- Navigate to Hanoi
- Look for an area where you can add something which is missing
- Edit (with Save)
- Make your Edit(s)
- Save

To create your account:

<https://www.openstreetmap.org/user/new>

NB The account with which you edit the OpenStreetMap database is **different** to the account which you use to edit the OSM Wiki!

Check the Vietnam project page for local recommendations on Tagging:

<http://wiki.openstreetmap.org/wiki/Vietnam>

It will take a little while for your edits to show up on the main map as the tiles need to be re-rendered:

http://wiki.openstreetmap.org/wiki/FAQ#I_have_just_made_some_changes_to_the_map._How_do_I_get_to_see_my_changes.3F



Vietnam?

<http://www.openstreetmap.org>



<http://wiki.openstreetmap.org/wiki/Vietnam>

Hanoi well-mapped (Mapping Party held in 2009)

Mailing list quiet:

<http://lists.openstreetmap.org/listinfo/talk-vi>

Domain openstreetmap.org.vn : Available

- Could be used to set up a local server for faster access for local users (&, potentially, applying alternate styling)



End