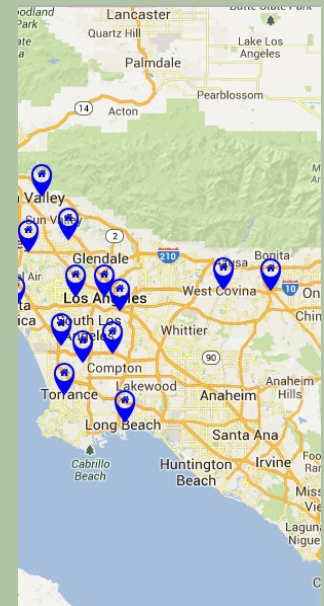
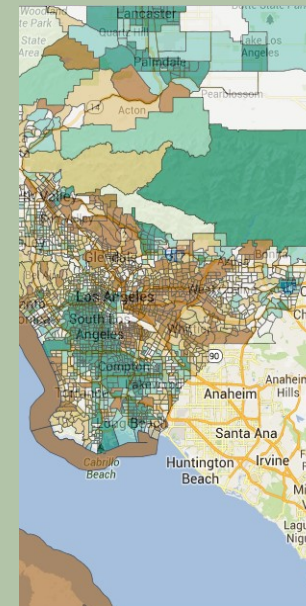
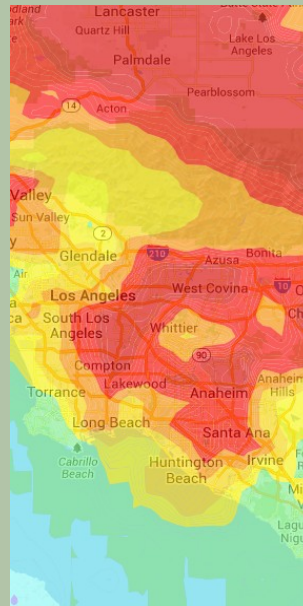
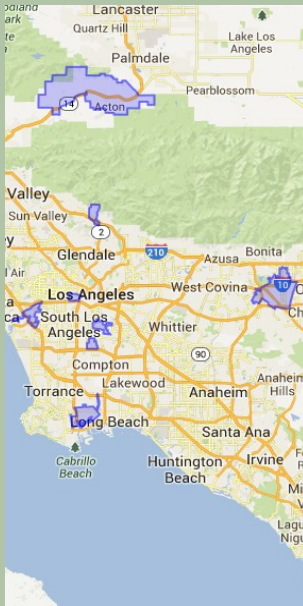




**SAHANA**

Community Resilience Mapping Tool

# User Manual



# Contents

1.....	Getting Started
2.....	SAHANA BASICS
3.....	Make a Map
4.....	Map: Coalitions
5.....	Map: Places
6.....	Map: Hazards
7.....	Map: Census Data
8.....	Save a Map
9.....	Community Data
10.....	Community Data Types
11.....	Community Data Table
12.....	Community Data Chart
13.....	Community Data Map
14.....	Save a Filter
15.....	Update Community Data
16.....	Add Community Data
17.....	Updates
18.....	HOW TO USE SAHANA
19.....	Expanding Your Coalition
20.....	Mapping Vulnerable Groups
21.....	Mapping Hazards
22.....	Managing Trainings
23.....	Tracking Outreach
24.....	MAP DATA

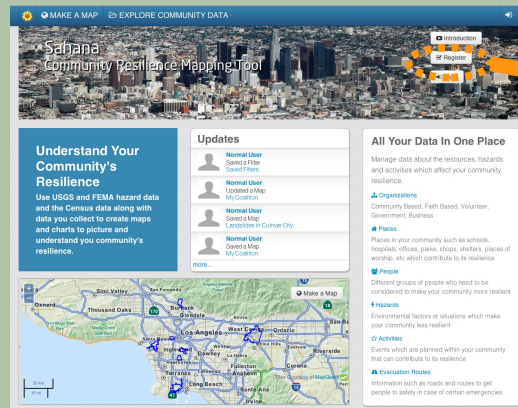
# Getting Started

To use Sahana, go to:

<http://lacrmt.sahanafoundation.org>

And register an account

**The Sahana Community Resilience Mapping Tool allows you to make maps and charts to picture and understand your community's resilience. It combines different sources of data about the people, hazards and places in your community along with your own Community Data which you can add and update.**



## Register

First Name: \*

Last Name:

E-mail: \*

Password: \*

You must enter a minimum of 4 characters

Verify Password: \*

Organization:

Coalition:

For training and experimentation you can use the Sahana Demo Site:

<http://demo.lacrmt.sahanafoundation.org/>

# SAHANA BASICS

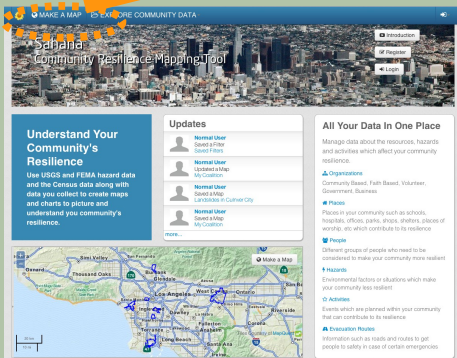
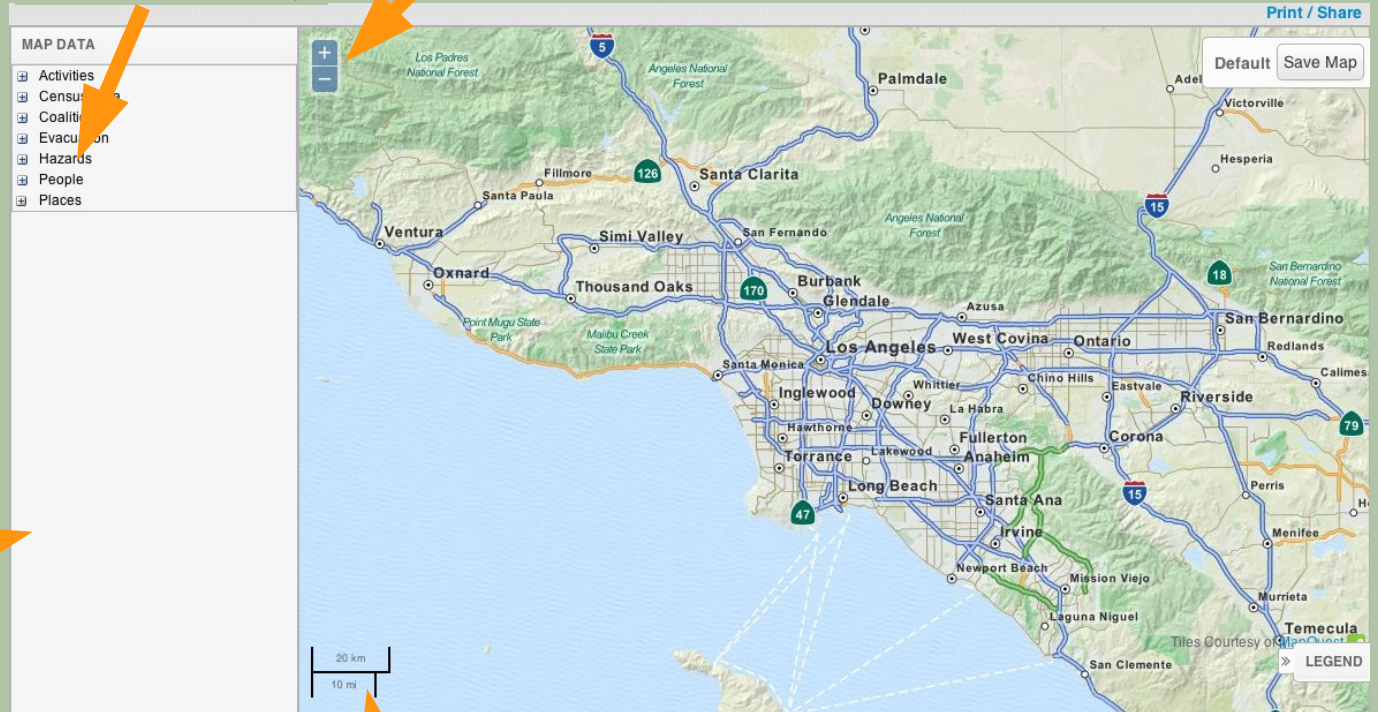
# Make a Map

Sahana's interactive map allows you to explore different types of data.

You can make maps that show and compare information about the people, hazards and places in your coalition.

Select  
Map Data to  
show on map

Zoom

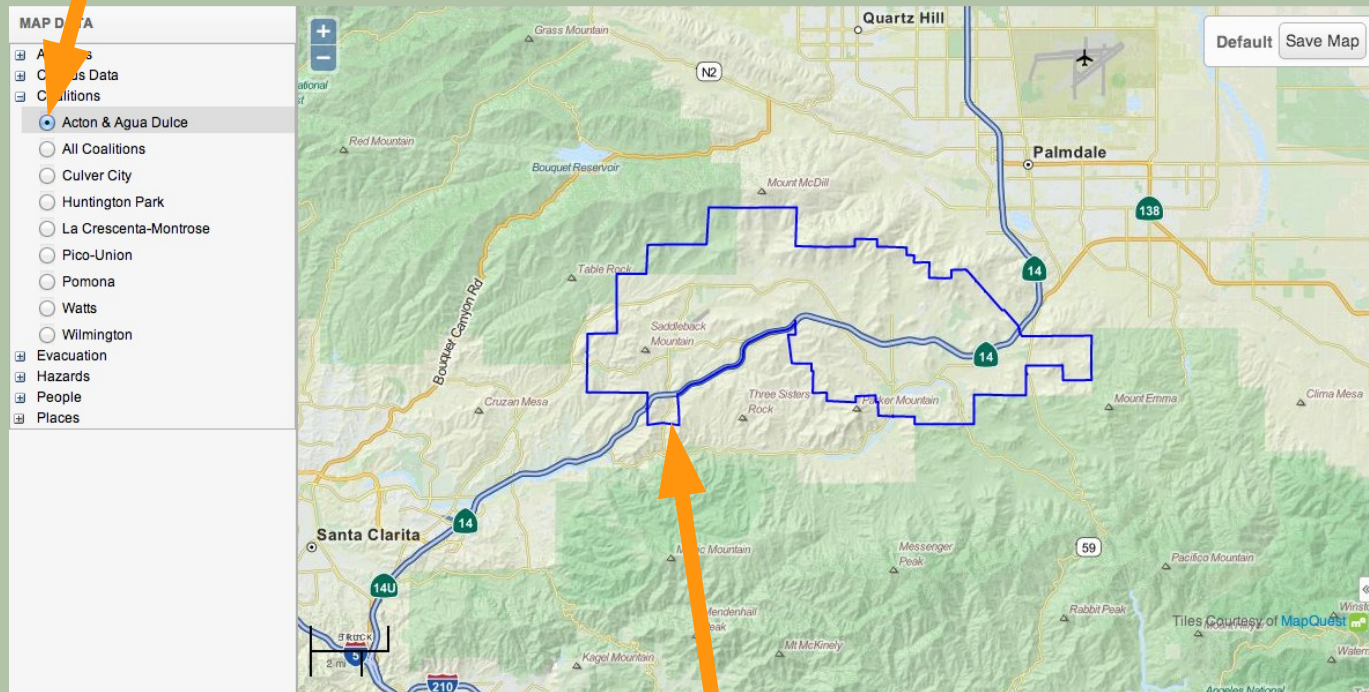




# Maps: Coalitions

You can display the outline of your coalition on the map.

Coalition selected



Coalition outline

# Maps: Places

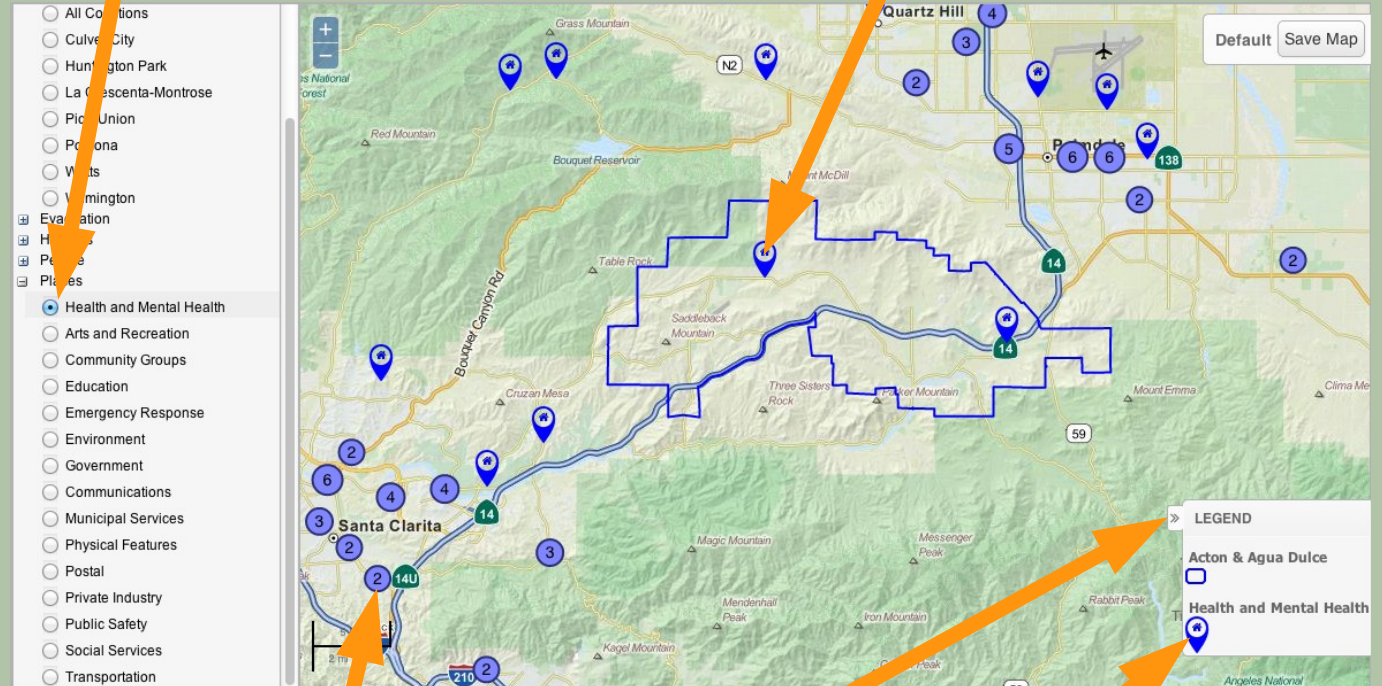
## You can show different types of places on the map.

## EXAMPLE:

### Health and Mental Health Clinics

Place selected

## Single Place



## Multiple Places (Cluster)

Hide legend

Legend showing  
map marker for  
Places

# Maps: Hazards

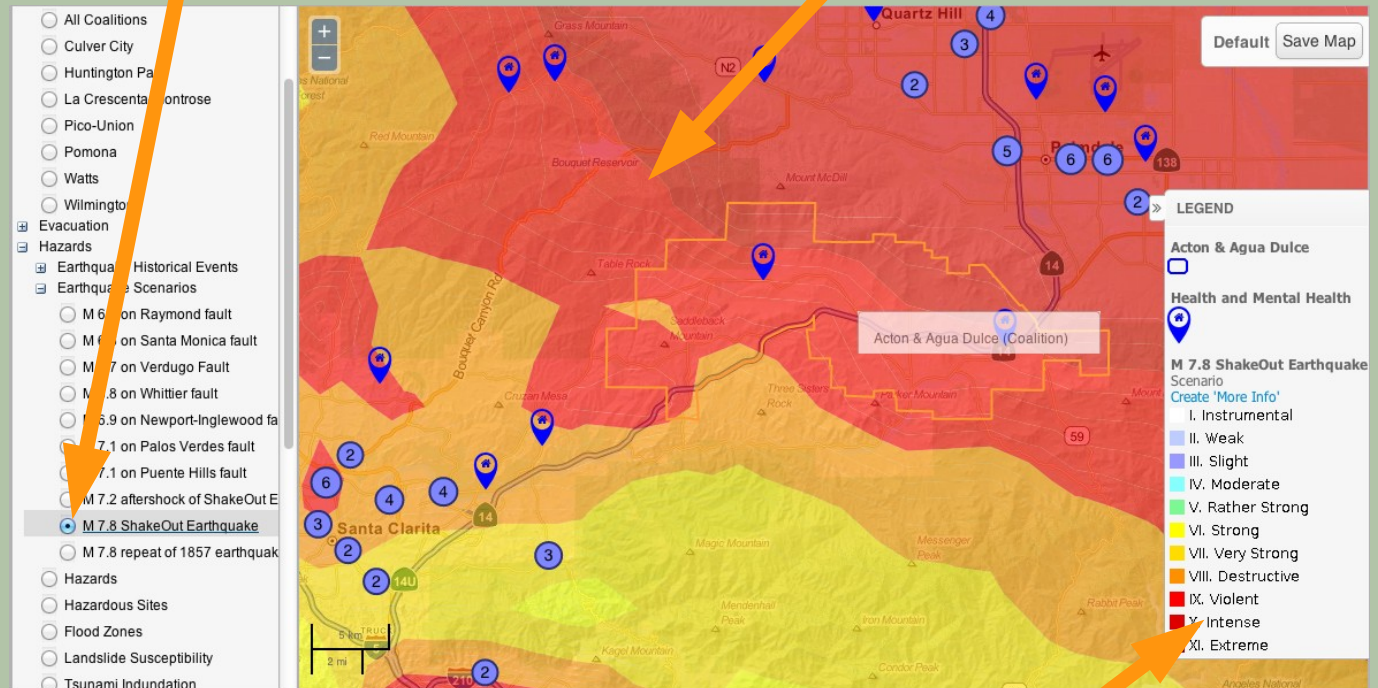
You can show how different hazards might affect your community

## EXAMPLE:

The intensity shake map of the 7.8 ShakeOut Earthquake scenario in the Acton Agua Dulce community

Hazard selected

Hazard displayed on map



Legend explaining how the Hazard is displayed on the map



# Maps: Census Data

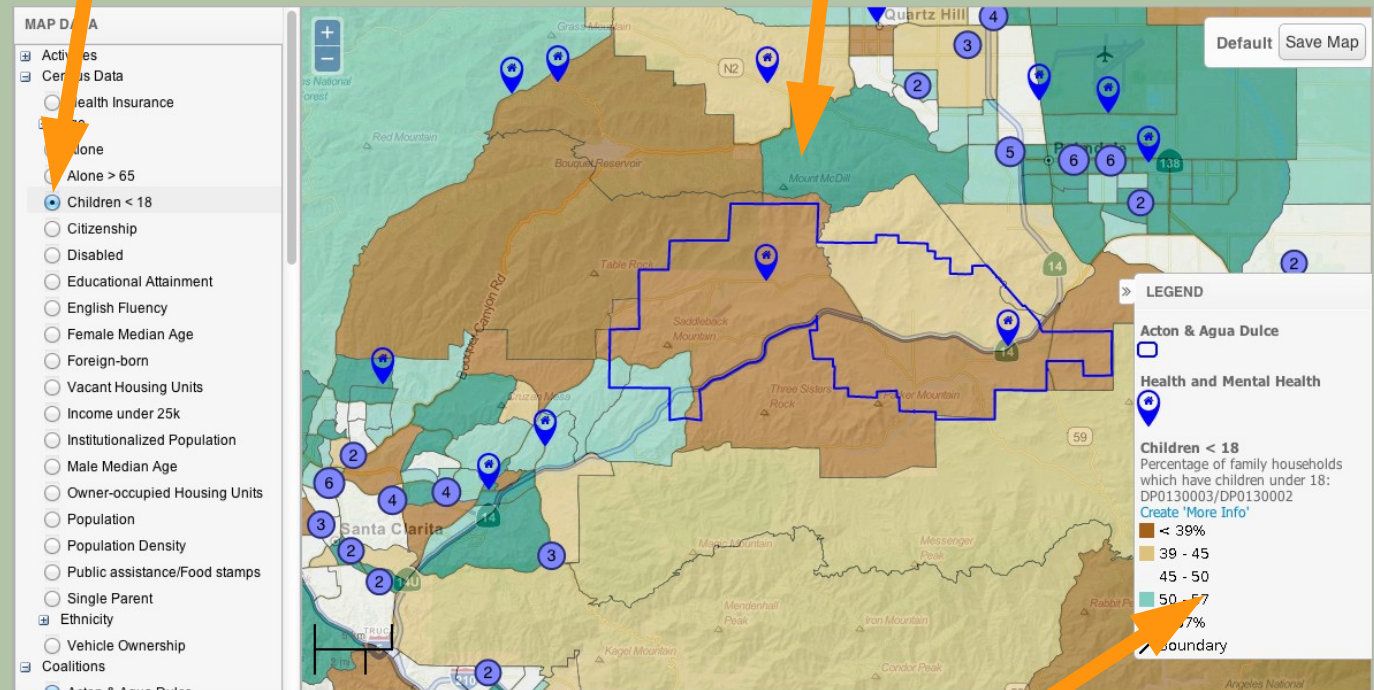
You can map census data to show concentrations of different populations in your community

## EXAMPLE:

This map shows the percent of households with children under 18

Census Data selected

Census Data displayed on map



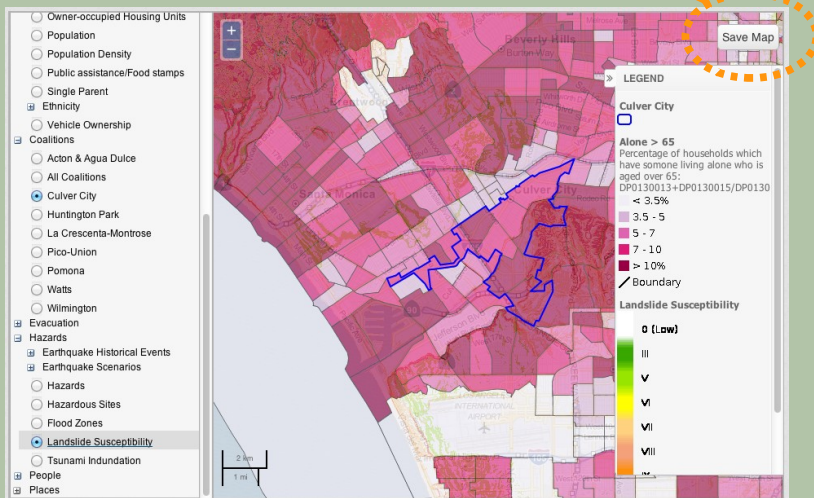
Legend explaining how the Census Data is displayed on the map

# Save a Map

Once you have selected data to make a map, you can save it to review later or share with others.

1 Make a map

2 Click "Save Map"



3

A dialog box titled 'Name of Map' with a text input field containing 'My Coalition' and a 'Save' button. Below the input field is a checkbox labeled 'Save as New Map?' which is checked.

Enter a name for the map

4

A dialog box titled 'Name of Map' with a text input field containing 'My Coalition' and a 'Save' button. Below the input field is a checkbox labeled 'Save as New Map?' which is checked.

Click "Save"

5

A dialog box titled 'Saved My Maps' with a 'Save' button. The text 'Saved My Maps' is displayed in green.

Map Saved

A user menu with a gear icon in the top right. The menu items are: 'Contact People', 'normaluser@example.com', 'Saved Filters', 'Saved Maps' (highlighted with an orange dashed circle), 'Change Password', and 'Logout'.

On the menu go to "Saved Maps" to see all your saved maps

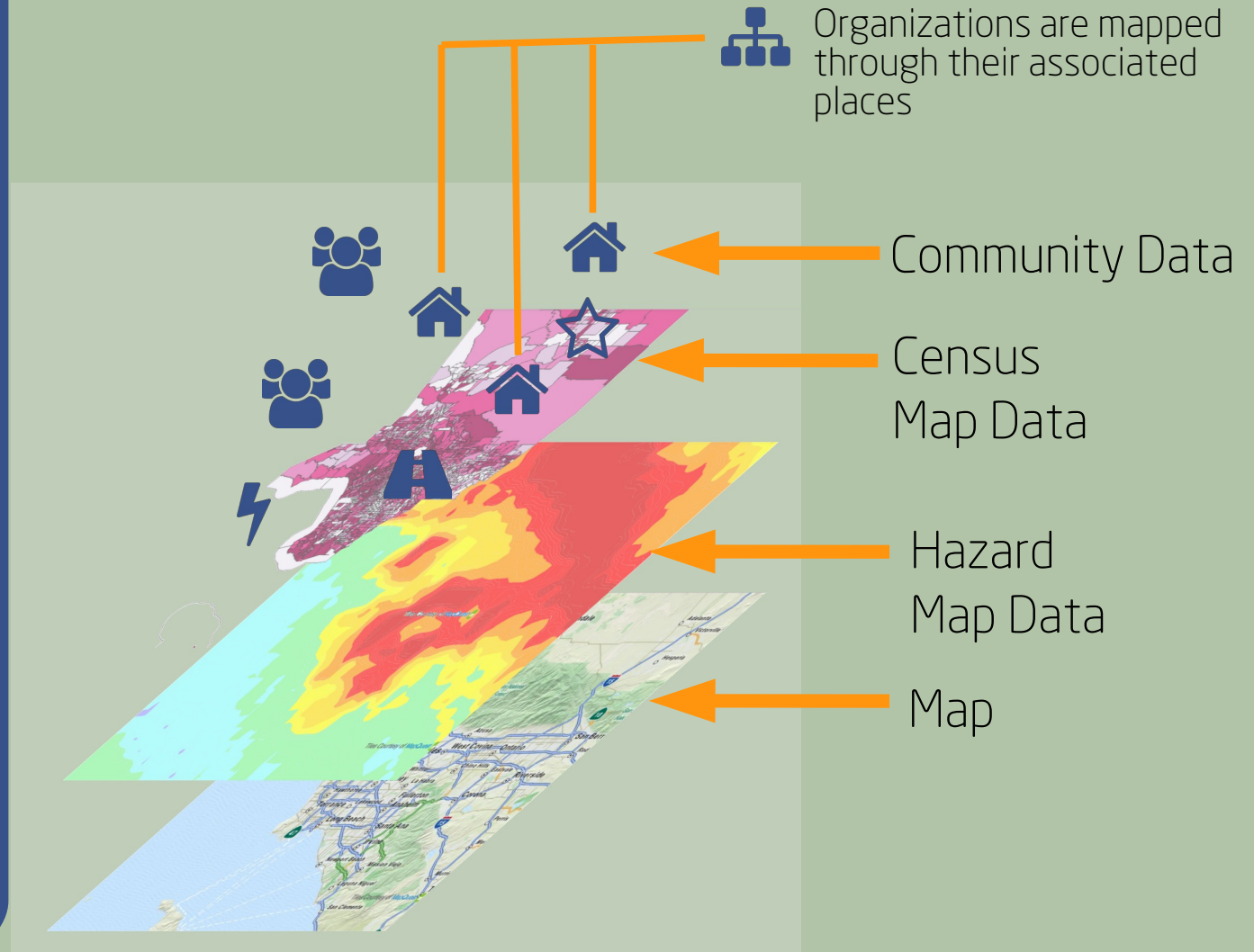
8

# Community Data

You can explore, update and add your own Community Data in Sahana. There are a number of different types of Community Data .

Sahana allows you to show Community Data on the map along with other Map Data such as US Census and USGS Data.

Some community data has been added from outside sources, but if you have data you would like to add, please contact [michael@sahanafoundation.org](mailto:michael@sahanafoundation.org)



# Community Data Types



## Organizations

Community Based, Faith Based, Volunteer, Government, Business which can serve as resources to your community



## Places

Find the places in your community such as schools, hospitals, offices, parks, shops and shelters which contribute to its resilience



## People

Identify the different groups of people who live in your community



## Hazards

View the environmental factors or situations which pose as dangers to your community



## Activities

Track the events which are planned within your community that will help strengthen it in the face of disasters



## Evacuation Routes

Identify the roads and routes to get people to safety in case of certain emergencies.



# Community Data Table

From the menu you can select each type of Community Data to view on a table.

From this page you are able to filter, update and add data as well as view it on a chart or map.

## EXAMPLE:

This table shows all of the places that exist in the coalitions. Use the filters to select specific coalitions or types of places to view.

Add new Community Data

Select what Community Data you want to view from the menu

View this data on a chart or map

The screenshot shows the 'EXPLORE COMMUNITY DATA' interface. It features a top navigation bar with a sun icon, a 'MAP' button, and an 'EXPLORE COMMUNITY DATA' button. Below this is a 'Places' section with a plus icon and a description: 'Places in your community such as schools, hospitals, offices, parks, shops, shelters, places of worship, etc which contribute to its resilience'. To the right of this section are buttons for 'Map', 'Charts', and 'Table'. The main area contains filters for 'Coalition' (8 selected), 'Type of Place' (a dropdown menu with options like Arts and Recreation, Communications, etc.), and 'Organization' (a dropdown menu). There is also a 'Search' field and a 'Clear filter' button. Below the filters is a table with columns: 'Organization', 'Coalition', 'Address', and 'Comments'. The table lists several entries, including 'US Postal Service (USPS)' in 'Wilmington' at '1161 N Avalonblvd'. Annotations with orange arrows point to various parts of the interface: 'Add new Community Data' points to the 'EXPLORE COMMUNITY DATA' button; 'Select what Community Data you want to view from the menu' points to the 'Type of Place' dropdown; 'View this data on a chart or map' points to the 'Map', 'Charts', and 'Table' buttons; 'Open for more details or to update' points to an 'Open' button next to a table row; 'Filter the table to view specific Community Data' points to the 'Type of Place' dropdown menu; and 'Save the filter to reuse later' points to a 'Save' button next to the filter section.

Open for more details or to update

Filter the table to view specific Community Data

Save the filter to reuse later

# Community Data Charts

The charts allows you to compare each of the different types of Community Data.

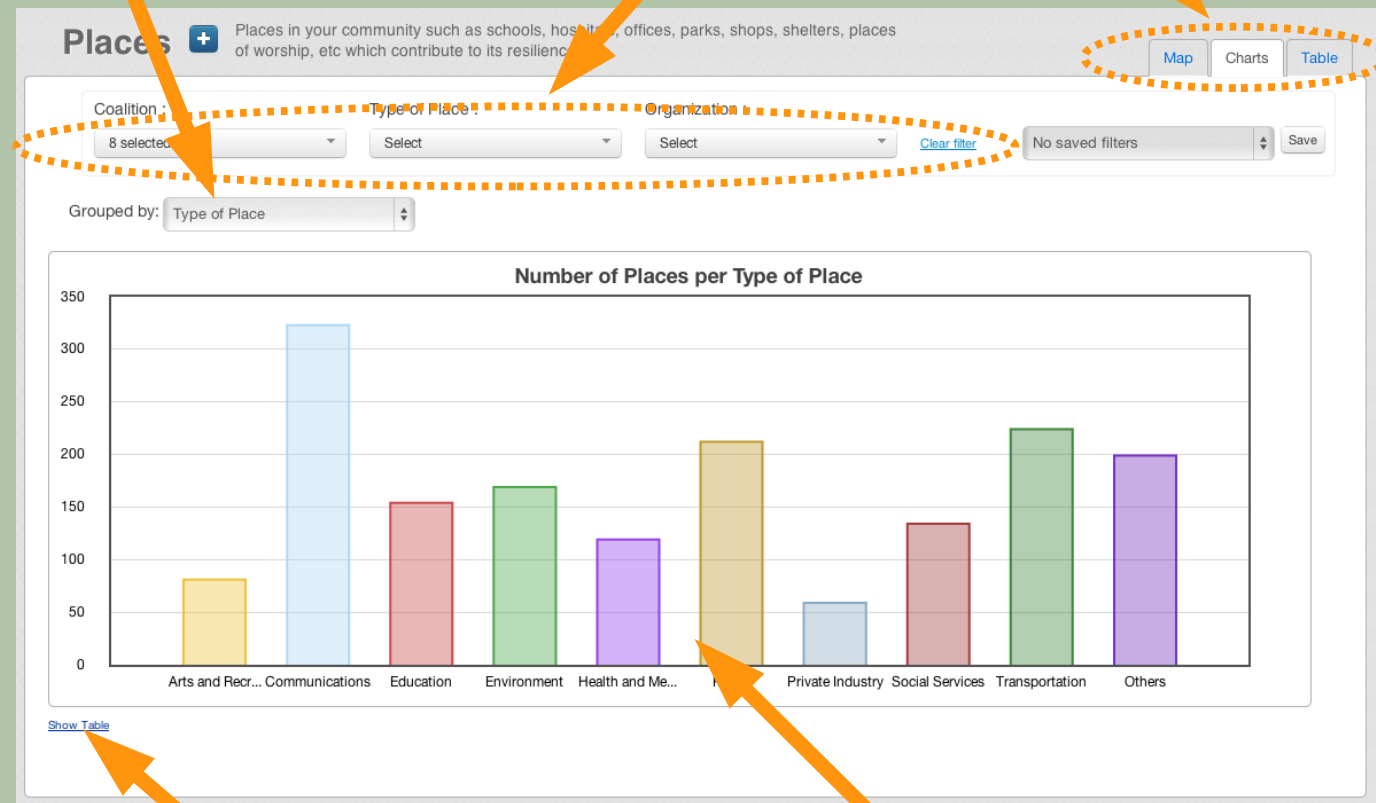
## EXAMPLE:

This chart shows the number of different types of places in the coalitions.

Select what you want to show on the chart

Change the filter to select only some of the places to view on the chart

View this data on a table or map



Show table of chart data

Chart of Community Data

# Community Data Map

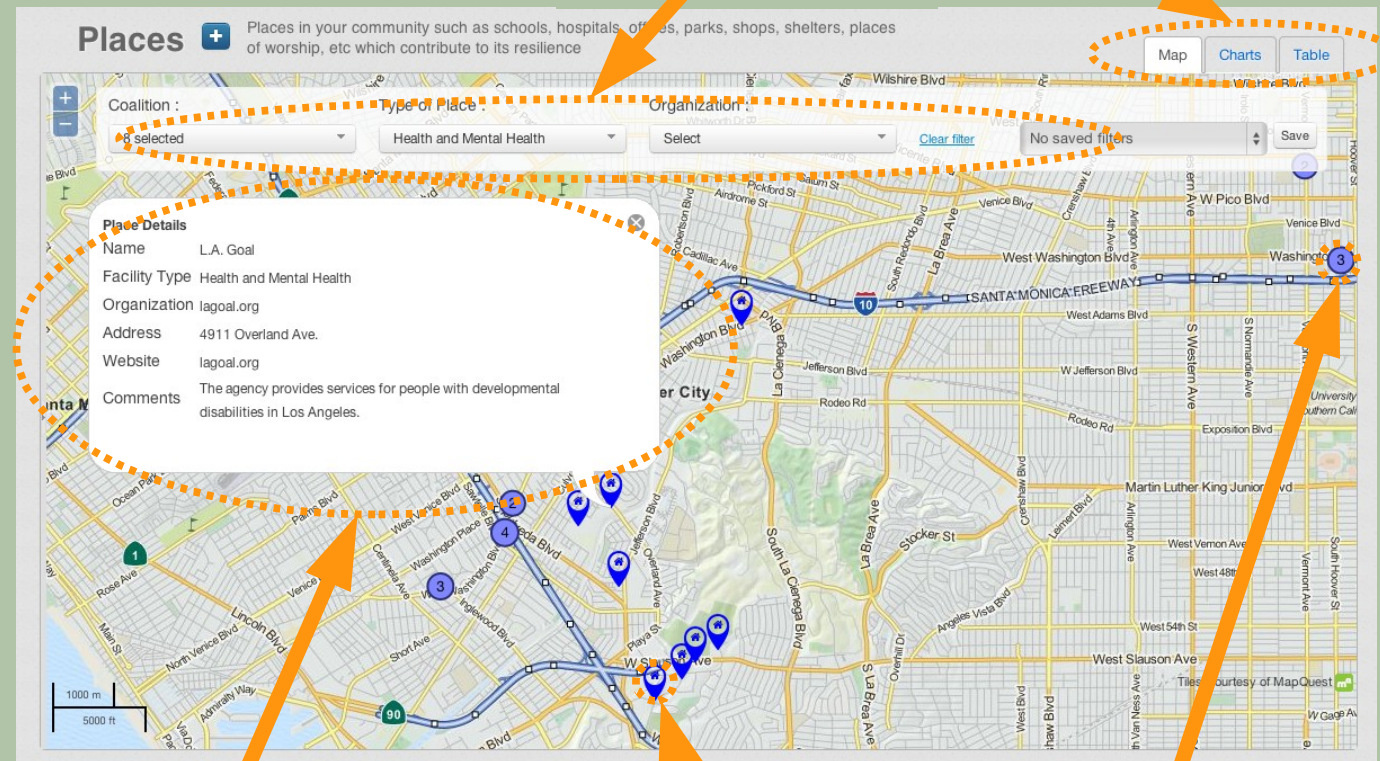
The map allows you to see where each of the different types of Community Data are located.

## EXAMPLE:

This chart shows the number of different types of places in the coalitions

View this data on a table or chart

Filter the map



Popup showing details for a place

Location of a place

Location of multiple place

# Save a Filter

Filters can be used to show a smaller selection of Community Data.

EXAMPLE:

- Only Places from Culver City and Watts
- Only Health and Mental Health Places

Once you have made a filter by selecting the coalitions and types of data you want to see you can save this filter to review later or share with others to gain a better understanding of your community's resilience.



1 Make a filter

2 Click "Save"


Coalition : Culver City, Watts Type of Place : Health and Mental Health Organization : Select [Clear filter](#) No saved filters Save

3 Enter a name for the filter

Select filter to reload it later

Health Places in Culver City + Watt  

4 Click Save icon

Health Places in Culver City + W  Save Update

Click "Update" to update the saved filter to the current filter



# Update Community Data

You can update you coalition's Organizations, Places, People, Hazards, Activities and Evacuation Routes which have been added.

**Update Place**

\* Required Fields

Name: \*

Type of Place:

Organization:   
[Add New Organization](#)  
[? HELP](#)

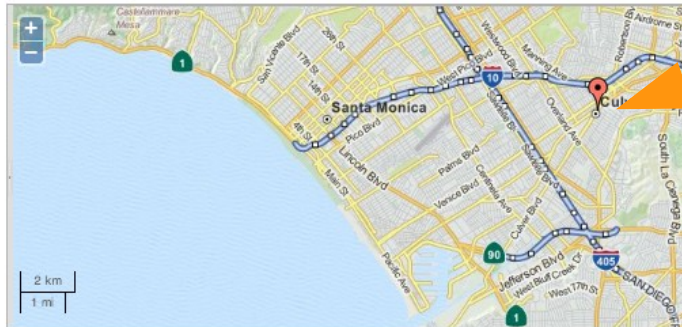
Coalition:

Street Address:

ZIP Code:

City:

[Find on Map](#)



Place's Contacts: Person  Job Title   
[Add New Job Title](#)

Files:  No file chosen

Comments:   
[? HELP](#)

Update the details

Update the address

Update the location

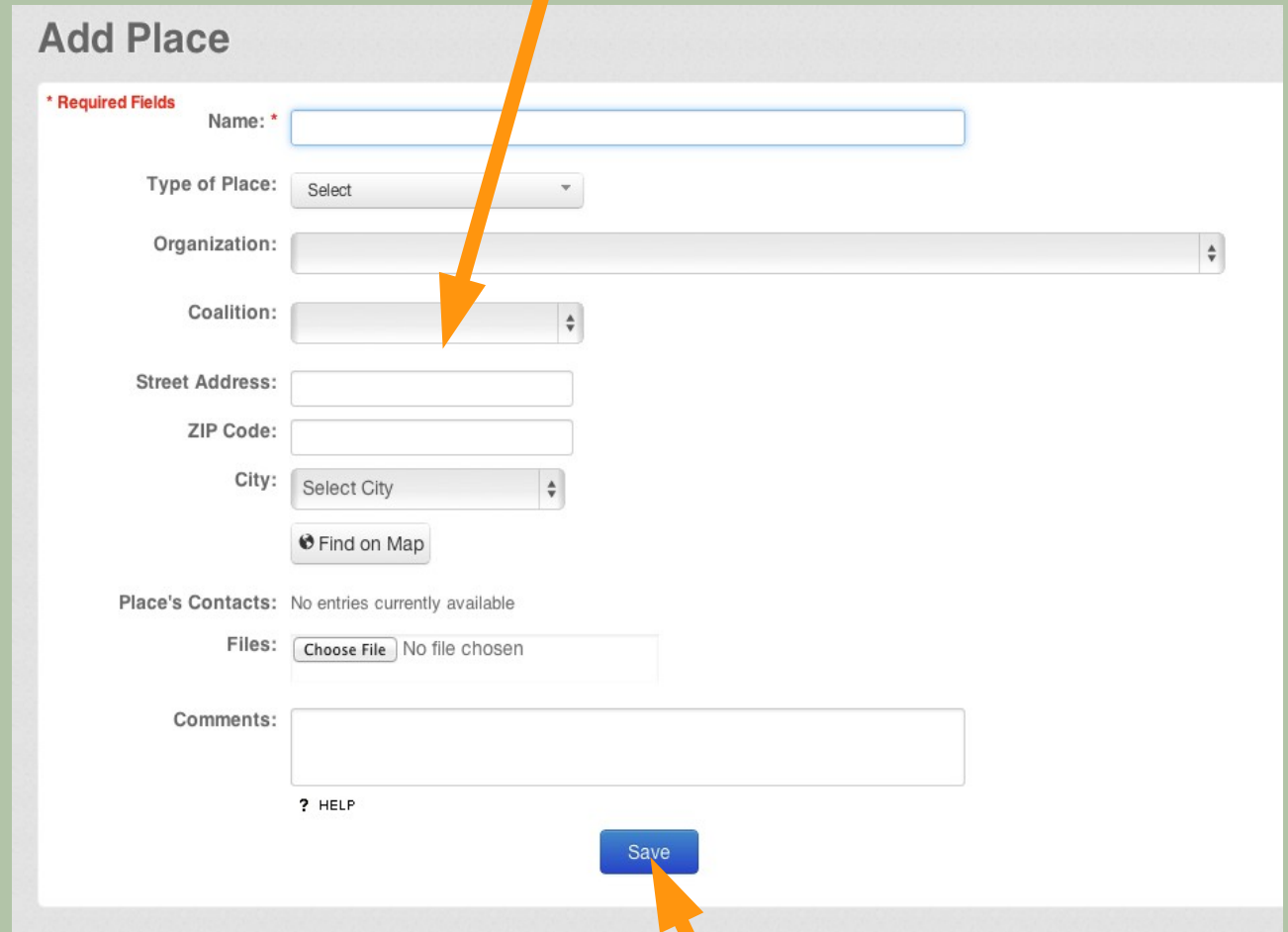
Click Save

# Add Community Data

**You can add new Organizations, Places, People, Hazards, Activities and Evacuation Routes as Community Data to Sahana.**

**If you have existing data in your own databases or spreadsheets, please contact [michael@sahanafoundation.org](mailto:michael@sahanafoundation.org)**

Enter the details



**Add Place**

**\* Required Fields**

Name: \*

Type of Place:

Organization:

Coalition:

Street Address:

ZIP Code:

City:

Place's Contacts: No entries currently available

Files:  No file chosen

Comments:

[? HELP](#)

Click Save

# Updates

User Profile Photo

User Name

Sahana keeps a track of all updates, added community data and saved maps and filters made by users and shares this on the homepage with your coalition and other users.

The screenshot shows the Sahana Community Resilience Mapping Tool interface. At the top, there's a navigation bar with 'MAKE A MAP' and 'EXPLORE COMMUNITY DATA'. Below this is a header image of a city skyline with the text 'Sahana Community Resilience Mapping Tool' and a 'Video Tutorials' button. The main content area is divided into three columns. The left column has a blue box titled 'Understand Your Community's Resilience' with the text 'Make maps and charts to picture and understand your community's resilience.' The middle column features an 'Updates' section with a list of recent activities. The right column is titled 'All Your Data In One Place' and lists various data categories: Organizations, Places, People, Hazards, and Activities, each with a brief description. At the bottom, there's a map of the Los Angeles area with various locations marked. Three orange arrows point from the labels above to specific elements: one points to a user profile icon in the 'Updates' list, another points to the 'Normal User' text in the same list, and a third points to the 'Update Details' text at the bottom of the page.

**Updates**

- Normal User Edited an Activity Community Gardening
- Normal User Edited a Place Tarzana Treatment Center - Reseda
- Normal User Edited a Place Family Planning Associates Medical Group - Torrance
- Normal User Edited a Place Planned Parenthood Pasadena And San Gabriel Valley - Eagle Rock

more...

**All Your Data In One Place**

Manage data about the resources, hazards and activities which affect your community resilience.

- Organizations**  
Community Based, Faith Based, Volunteer, Government, Business
- Places**  
Find the places in your community such as schools, hospitals, offices, parks, shops and shelters which contribute to its resilience
- People**  
Identify the different groups of people who live in your community
- Hazards**  
View the environmental factors or situations which pose as dangers to your community
- Activities**  
Track the events which are planned within your community that will help strengthen it in the face of disasters
- Evacuation Routes**  
Identify the roads and routes to get people to safety in case of certain emergencies.

Update Details

# HOW TO USE SAHANA



# Expanding Your Coalition

With Sahana you can record your coalitions partners, identify gaps in the sectors they represent and services they provide.

Update or add organizations that are members of your coalition

### Edit Organization

\* Required Fields

Name: \* Los Angeles Fire Department

Logo:  No file selected.

? HELP

Coalitions: Watts

Sectors: ☒ Acton & Agua Dulce  
☐ Culver City

Services: ☐ Huntington Park  
☐ La Crescenta

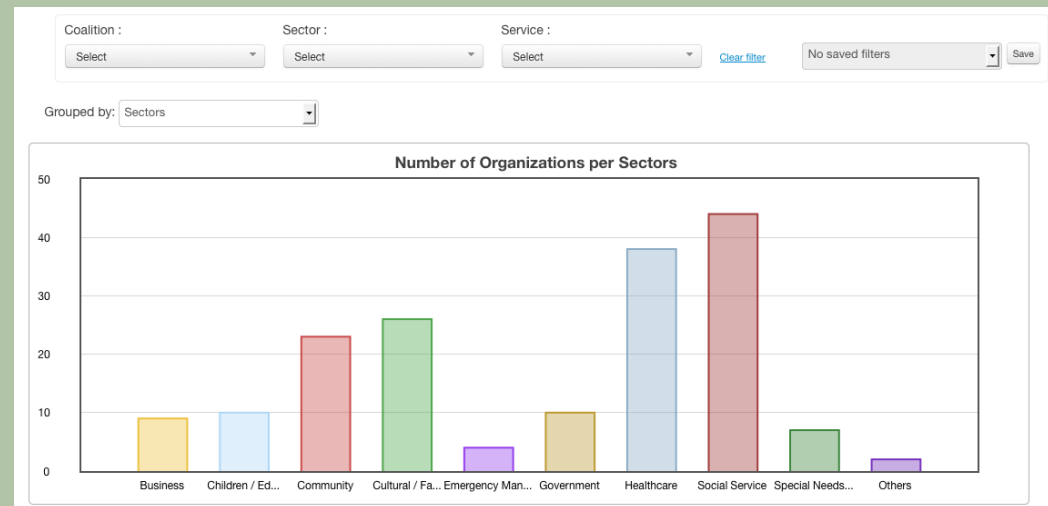
Organization's Contacts: ☐ La Crescenta-Montrose  
☐ Pico-Union  
☐ Pomona

Organization's Places: ☒ Watts  
☐ Wilmington

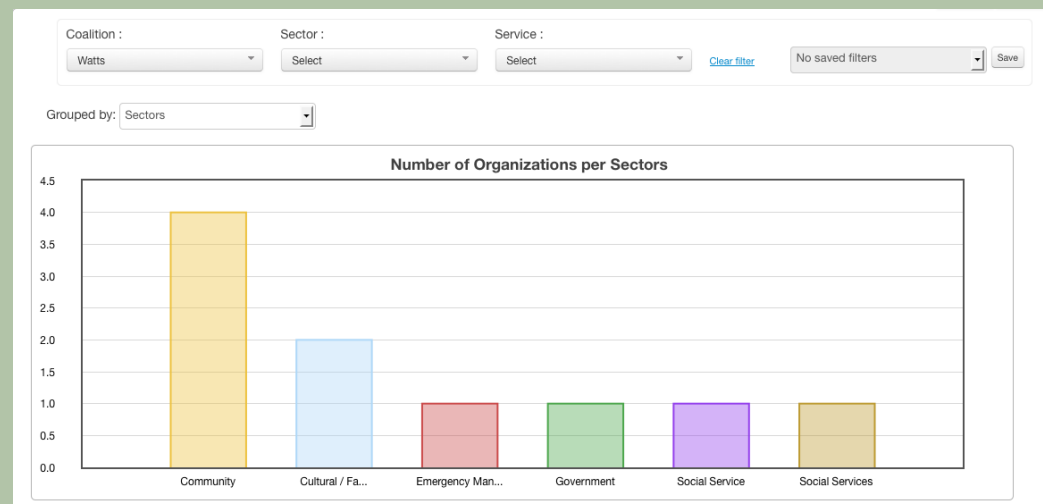
Organization's Resources:

[Add New Resource Type](#)

Chart of organization sectors



Filtered by your coalition to identify gaps



# Mapping Vulnerable Groups

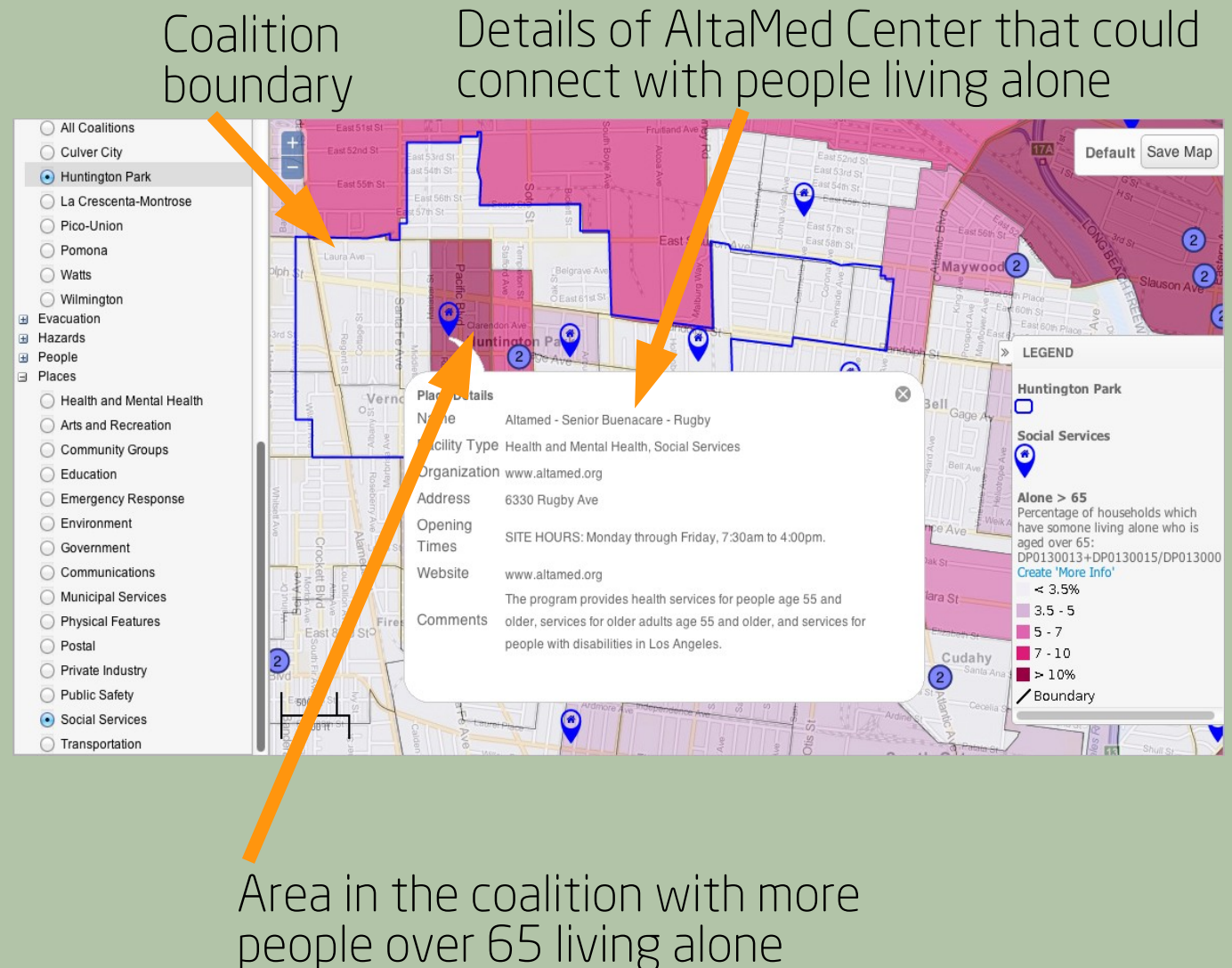
**Sahana can be used to identify areas with vulnerable groups and find nearby resources.**

**Coalitions can now engage nearby resources or organizations to ensure that the vulnerable groups are included in resilience planning.**

## **EXAMPLE:**

**In Huntington Park there is a area with a higher concentration of people over 65 living alone.**

**Sahana can be used to find nearby places that could connect with these people.**



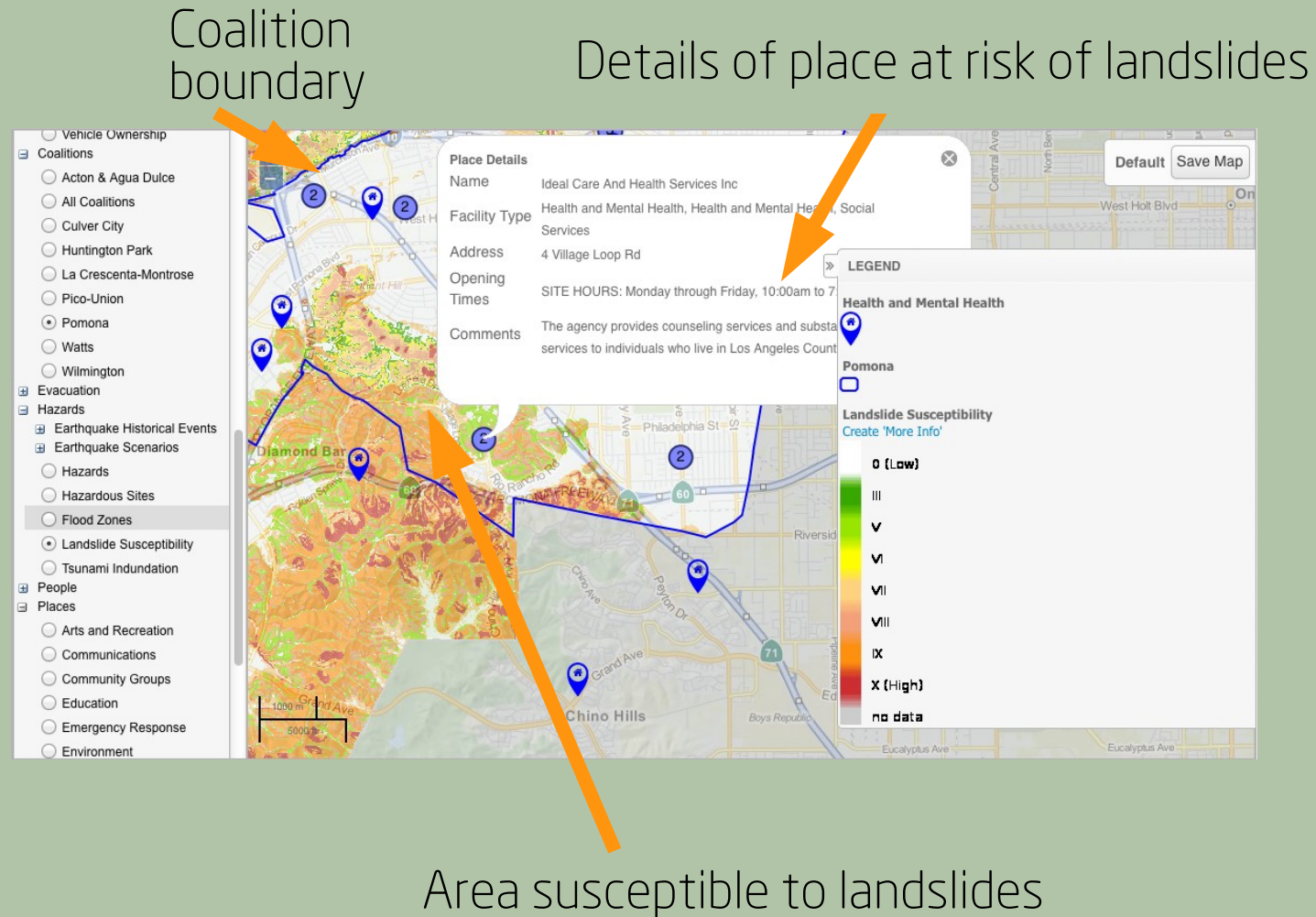
# Mapping Hazards

Sahana can be used to identify places which could be affected by hazards.

Coalitions can then engage these organizations to ensure that they are aware of any risks and to take appropriate steps to mitigate them.

## EXAMPLE:

From this map we can see that Ideal Care And Health Services Inc is located in a part of Pomona that is susceptible to landslides.



# Managing Trainings

**Coalitions can use Sahana to record training activities and the number of trained people to track their progress and ensure that enough people are being trained throughout the County. This can help track the people who are engaged in community resilience.**

Map showing locations of trainings

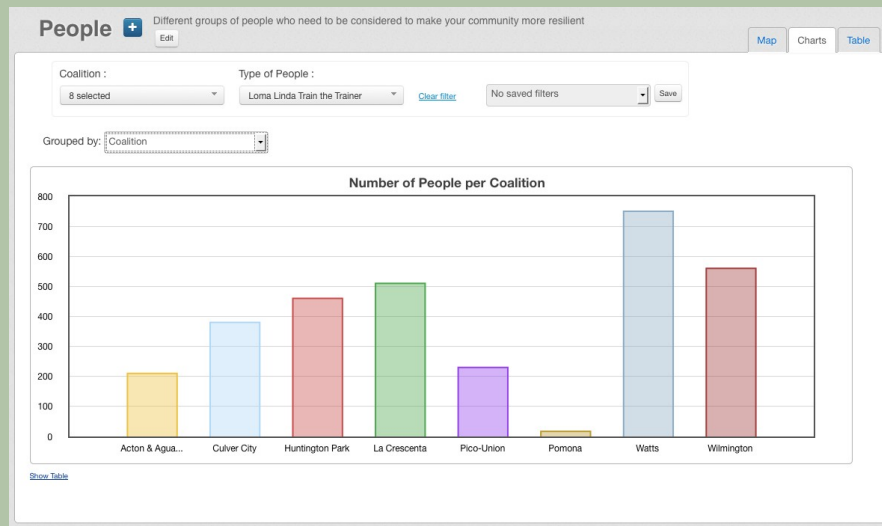
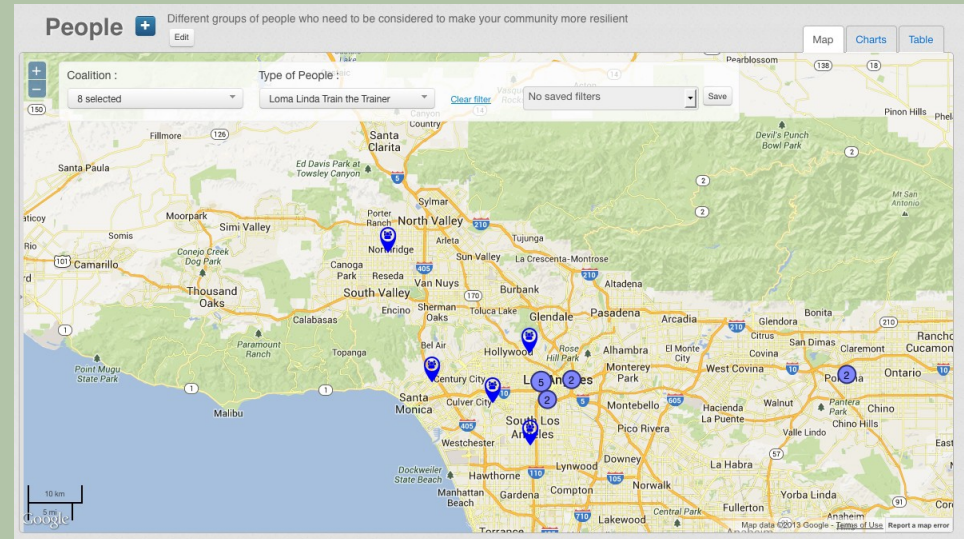


Chart comparing the number of trained people in different coalitions



# Tracking Outreach

Coalitions can use Sahana to record outreach activities and the number of people they have engaged

Add outreach activities to Sahana

Compare the number of outreach activities between coalitions

**Add Activity**

\* Required Fields

Date:  [clear](#)

Name:

Activity Type:  [Add Activity Type](#) [? HELP](#)

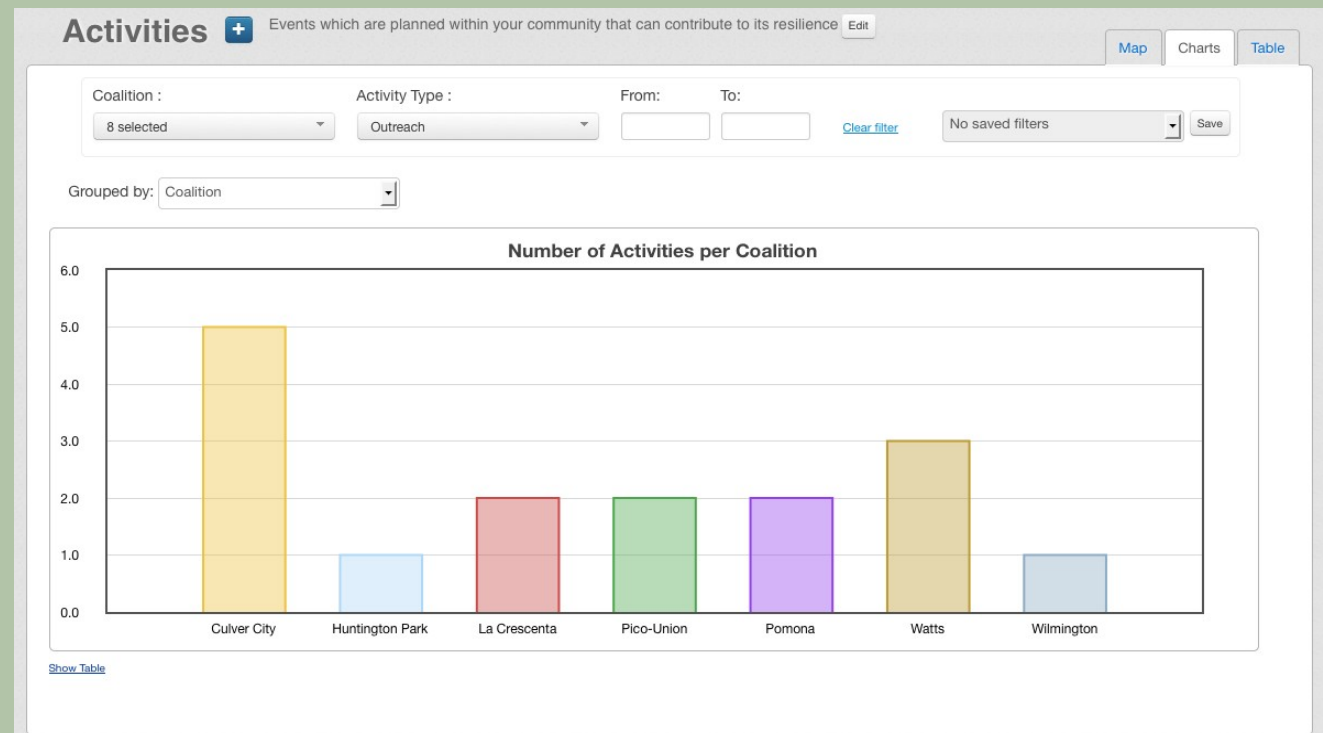
Coalition:

Participating Organizations:  [Add New Organization](#)

Files:  [Browse...](#) No file selected. [+](#)

Comments:  [? HELP](#)

[Save](#)



# MAP DATA

This is a list of all the data that can be displayed on the map in Sahana and the source of that data.

Category	Sub-Category	Name	Description	Source Name	Source URL
Places		Locations / Points of Interest		LA County	<a href="http://egis3.lacounty.gov/dataportal/2011/03/24/locations-points-of-interest-lms-data/">http://egis3.lacounty.gov/dataportal/2011/03/24/locations-points-of-interest-lms-data/</a>
Census Data	Age	Age < 5	Percentage of population aged under 5	2010 Census	<a href="http://www.census.gov/2010census/">http://www.census.gov/2010census/</a>
Census Data	Age	Age 5-19	Percentage of population aged between 5 and 19	2010 Census	<a href="http://www.census.gov/2010census/">http://www.census.gov/2010census/</a>
Census Data	Age	Age 20-39	Percentage of population aged between 20 and 39	2010 Census	<a href="http://www.census.gov/2010census/">http://www.census.gov/2010census/</a>
Census Data	Age	Age 40-64	Percentage of population aged between 40 and 64	2010 Census	<a href="http://www.census.gov/2010census/">http://www.census.gov/2010census/</a>
Census Data	Age	Age 65-79	Percentage of population aged between 65 and 79	2010 Census	<a href="http://www.census.gov/2010census/">http://www.census.gov/2010census/</a>
Census Data	Age	Age > 80	Percentage of population aged over 80	2010 Census	<a href="http://www.census.gov/2010census/">http://www.census.gov/2010census/</a>

Category	Sub-Category	Name	Description	Source Name	Source URL
Census Data	Ethnicity	American Indian or Alaskan	Percentage of population which is American Indian or Alaskan native and not Hispanic or Latino	2010 Census	<a href="http://www.census.gov/2010census/">http://www.census.gov/2010census/</a>
Census Data	Ethnicity	Asian non-Hispanic	Percentage of population which is Asian and not Hispanic or Latino	2010 Census	<a href="http://www.census.gov/2010census/">http://www.census.gov/2010census/</a>
Census Data	Ethnicity	Black non-Hispanic	Percentage of population which is Black or African American and not Hispanic or Latino	2010 Census	<a href="http://www.census.gov/2010census/">http://www.census.gov/2010census/</a>
Census Data	Ethnicity	Children < 18	Percentage of family households which have children under 18	2010 Census	<a href="http://www.census.gov/2010census/">http://www.census.gov/2010census/</a>
Census Data	Ethnicity	Hawaiian or Pacific Islander	Percentage of population which is Native Hawaiian or Pacific Islander and not Latino	2010 Census	<a href="http://www.census.gov/2010census/">http://www.census.gov/2010census/</a>
Census Data	Ethnicity	Hispanic or Latino	Percentage of population which is Hispanic or Latino	2010 Census	<a href="http://www.census.gov/2010census/">http://www.census.gov/2010census/</a>
Census Data	Ethnicity	White non-Hispanic	Percentage of population which is White and not Hispanic or Latino	2010 Census	<a href="http://www.census.gov/2010census/">http://www.census.gov/2010census/</a>
Census Data		Population	Population	2010 Census	<a href="http://www.census.gov/2010census/">http://www.census.gov/2010census/</a>

<b>Category</b>	<b>Sub-Category</b>	<b>Name</b>	<b>Description</b>	<b>Source Name</b>	<b>Source URL</b>
Census Data		Population Density	Population per square mile of land	2010 Census	<a href="http://www.census.gov/2010census/">http://www.census.gov/2010census/</a>
Census Data		Alone	Percentage of households which have someone living alone	2010 Census	<a href="http://www.census.gov/2010census/">http://www.census.gov/2010census/</a>
Census Data		Alone > 65	Percentage of households which have someone living alone who is aged over 65	2010 Census	<a href="http://www.census.gov/2010census/">http://www.census.gov/2010census/</a>
Census Data		Citizenship	Percentage of population which is not a US Citizen	American Community Survey 2011	<a href="http://www2.census.gov/acs2011_1yr/summaryfile/">http://www2.census.gov/acs2011_1yr/summaryfile/</a>
Census Data		Disabled	Percentage of civilian non-institutionalized population which has a Disability	American Community Survey 2011	<a href="http://www2.census.gov/acs2011_1yr/summaryfile/">http://www2.census.gov/acs2011_1yr/summaryfile/</a>
Census Data		Educational Attainment	Percentage of population over 25 without a degree	American Community Survey 2011	<a href="http://www2.census.gov/acs2011_1yr/summaryfile/">http://www2.census.gov/acs2011_1yr/summaryfile/</a>
Census Data		English Fluency	Percentage of population over 5 which Speak English less than 'very well'	American Community Survey 2011	<a href="http://www2.census.gov/acs2011_1yr/summaryfile/">http://www2.census.gov/acs2011_1yr/summaryfile/</a>
Census Data		Foreign-born	Percentage of population which is foreign-born	American Community Survey 2011	<a href="http://www2.census.gov/acs2011_1yr/summaryfile/">http://www2.census.gov/acs2011_1yr/summaryfile/</a>
Census Data		Health Insurance	Percentage of civilian non-institutionalized population which has no health insurance	American Community Survey 2011	<a href="http://www2.census.gov/acs2011_1yr/summaryfile/">http://www2.census.gov/acs2011_1yr/summaryfile/</a>



Category	Sub-Category	Name	Description	Source Name	Source URL
Census Data		Income under 25k	Percentage of households with an Income In The Past 12 Months of less than 25,000 (2011 Inflation-Adjusted) Dollars	American Community Survey 2011	<a href="http://www2.census.gov/acs2011_1yr/summaryfile/">http://www2.census.gov/acs2011_1yr/summaryfile/</a>
Census Data		Institutionalized Population	Percentage of population which is institutionalized	2010 Census	<a href="http://www.census.gov/2010census/">http://www.census.gov/2010census/</a>
Census Data		Male Median Age	Male Median Age	2010 Census	<a href="http://www.census.gov/2010census/">http://www.census.gov/2010census/</a>
Census Data		Female Median Age	Female Median Age	2010 Census	<a href="http://www.census.gov/2010census/">http://www.census.gov/2010census/</a>
Census Data		Owner-occupied Housing Units	Percentage of occupied housing units which are owner-occupied	2010 Census	<a href="http://www.census.gov/2010census/">http://www.census.gov/2010census/</a>
Census Data		Public assistance/Food stamps	Percentage of households which were in receipt of Public Assistance Income Or Food Stamps/Snap in the Past 12 Months	American Community Survey 2011	<a href="http://www2.census.gov/acs2011_1yr/summaryfile/">http://www2.census.gov/acs2011_1yr/summaryfile/</a>
Census Data		Single Parent	Percentage of households which have a single parent	2010 Census	<a href="http://www.census.gov/2010census/">http://www.census.gov/2010census/</a>
Census Data		Vacant Housing Units	Percentage of housing units which are vacant	2010 Census	<a href="http://www.census.gov/2010census/">http://www.census.gov/2010census/</a>
Census Data		Vehicle Ownership	Percentage of households which don't have access to a vehicle	American Community Survey 2011	<a href="http://www2.census.gov/acs2011_1yr/summaryfile/">http://www2.census.gov/acs2011_1yr/summaryfile/</a>

Category	Sub-Category	Name	Description	Source Name	Source URL
Hazards	Earthquake Historical Events	Northridge, 1994	Actual Earthquake	USGS	<a href="http://earthquake.usgs.gov/earthquakes/shakemap/sc/shake/Northridge">http://earthquake.usgs.gov/earthquakes/shakemap/sc/shake/Northridge</a>
Hazards	Earthquake Historical Events	San Fernando, 1971	Actual Earthquake	USGS	<a href="http://earthquake.usgs.gov/earthquakes/shakemap/sc/shake/San_Fernando">http://earthquake.usgs.gov/earthquakes/shakemap/sc/shake/San_Fernando</a>
Hazards	Earthquake Historical Events	Whittier Narrows, 1987	Actual Earthquake	USGS	<a href="http://earthquake.usgs.gov/earthquakes/shakemap/sc/shake/Whittier_Narrows">http://earthquake.usgs.gov/earthquakes/shakemap/sc/shake/Whittier_Narrows</a>
Hazards	Earthquake Historical Events	Sierra Madre, 1991	Actual Earthquake	USGS	<a href="http://earthquake.usgs.gov/earthquakes/shakemap/sc/shake/Sierra_Madre">http://earthquake.usgs.gov/earthquakes/shakemap/sc/shake/Sierra_Madre</a>
Hazards	Earthquake Historical Events	Diamond Bar, 2008	Actual Earthquake	USGS	<a href="http://earthquake.usgs.gov/earthquakes/shakemap/sc/shake/14383980">http://earthquake.usgs.gov/earthquakes/shakemap/sc/shake/14383980</a>
Hazards	Earthquake Scenarios	M 6.7 on Verdugo Fault	Scenario	USGS	<a href="http://earthquake.usgs.gov/earthquakes/shakemap/sc/shake/Verdugo6.7_se">http://earthquake.usgs.gov/earthquakes/shakemap/sc/shake/Verdugo6.7_se</a>
Hazards	Earthquake Scenarios	M 7.2 aftershock of ShakeOut Earthquake	Scenario	USGS	<a href="http://earthquake.usgs.gov/earthquakes/shakemap/sc/shake/ShakeOut2_AS2_se">http://earthquake.usgs.gov/earthquakes/shakemap/sc/shake/ShakeOut2_AS2_se</a>
Hazards	Earthquake Scenarios	M 7.8 ShakeOut Earthquake	Scenario	USGS	<a href="http://earthquake.usgs.gov/earthquakes/shakemap/sc/shake/shakeout2_full_se">http://earthquake.usgs.gov/earthquakes/shakemap/sc/shake/shakeout2_full_se</a>
Hazards	Earthquake Scenarios	M 7.1 on Puente Hills fault	Scenario	USGS	<a href="http://earthquake.usgs.gov/earthquakes/shakemap/sc/shake/Puente_Hills_se">http://earthquake.usgs.gov/earthquakes/shakemap/sc/shake/Puente_Hills_se</a>
Hazards	Earthquake Scenarios	M 6.5 on Raymond fault	Scenario	USGS	<a href="http://earthquake.usgs.gov/earthquakes/shakemap/sc/shake/Raymond6.5_se">http://earthquake.usgs.gov/earthquakes/shakemap/sc/shake/Raymond6.5_se</a>

Category	Sub-Category	Name	Description	Source Name	Source URL
Hazards	Earthquake Scenarios	M 6.8 on Whittier fault	Scenario	USGS	<a href="http://earthquake.usgs.gov/earthquakes/shakemap/sc/sake/Whittier6.8_se">http://earthquake.usgs.gov/earthquakes/shakemap/sc/sake/Whittier6.8_se</a>
Hazards	Earthquake Scenarios	M 7.8 repeat of 1857 earthquake on San Andreas fault	Scenario	USGS	<a href="http://earthquake.usgs.gov/earthquakes/shakemap/sc/sake/1857_se">http://earthquake.usgs.gov/earthquakes/shakemap/sc/sake/1857_se</a>
Hazards	Earthquake Scenarios	M 7.1 on Palos Verdes fault	Scenario	USGS	<a href="http://earthquake.usgs.gov/earthquakes/shakemap/sc/sake/Palos_Verdes7.1_se">http://earthquake.usgs.gov/earthquakes/shakemap/sc/sake/Palos_Verdes7.1_se</a>
Hazards	Earthquake Scenarios	M 6.9 on Newport-Inglewood fault	Scenario	USGS	<a href="http://earthquake.usgs.gov/earthquakes/shakemap/sc/sake/Newport_Inglewood6.9_se">http://earthquake.usgs.gov/earthquakes/shakemap/sc/sake/Newport_Inglewood6.9_se</a>
Hazards	Earthquake Scenarios	M 6.6 on Santa Monica fault	Scenario	USGS	<a href="http://earthquake.usgs.gov/earthquakes/shakemap/sc/sake/StaMonica6.6_se">http://earthquake.usgs.gov/earthquakes/shakemap/sc/sake/StaMonica6.6_se</a>
Hazards		Flood Zones	FEMA FIRM (Flood Insurance Rate Maps) from 2013-04-16	FEMA Flood Zones	<a href="http://dpw.lacounty.gov/wm/d/floodzone/">http://dpw.lacounty.gov/wm/d/floodzone/</a>
Hazards		Landslide Susceptibility		California Geological Survey	<a href="ftp://ftp.consrv.ca.gov/pub/dmg/rgmp/MS58/Susdata.zip">ftp://ftp.consrv.ca.gov/pub/dmg/rgmp/MS58/Susdata.zip</a>
Hazards		Tsunami Indundation	Potential Tsunami Indundation Area	California Geological Survey	<a href="http://www.quake.ca.gov/gmaps/WH/tsunamimaps.htm">http://www.quake.ca.gov/gmaps/WH/tsunamimaps.htm</a>